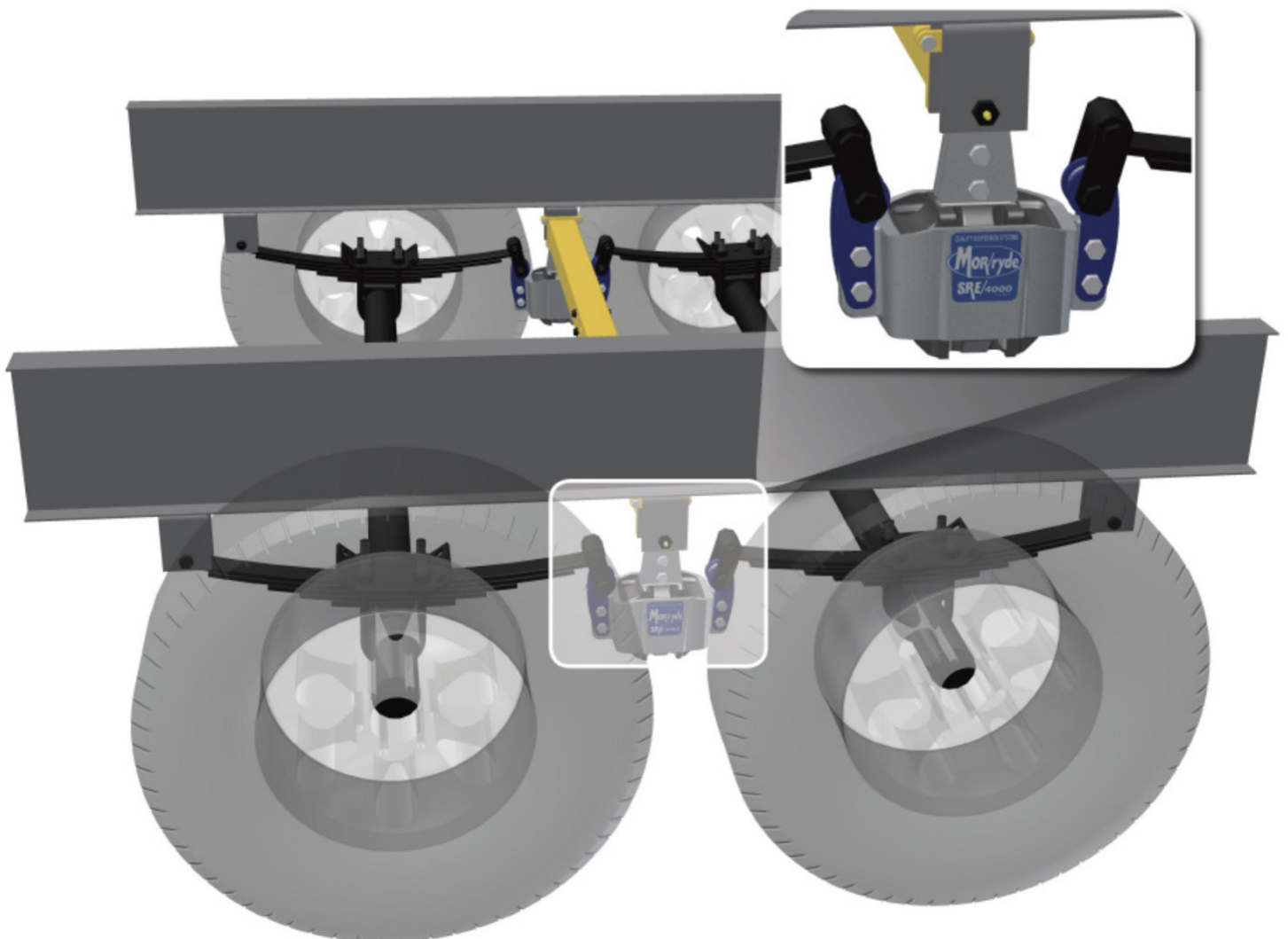




Above. Beyond. Always.

SRE₄₀₀₀ Suspension System Owner's Manual



SRE₄₀₀₀ Suspension System

Contents

Introduction.....	2
Parts Listing.....	3
Tripe Axle Setup.....	4
Measuring Shear Spring Deflection.....	5
Minimum Clearance Requirements.....	5
Rubber Spring Inspection.....	5
Basic Troubleshooting.....	6
Warranty.....	7

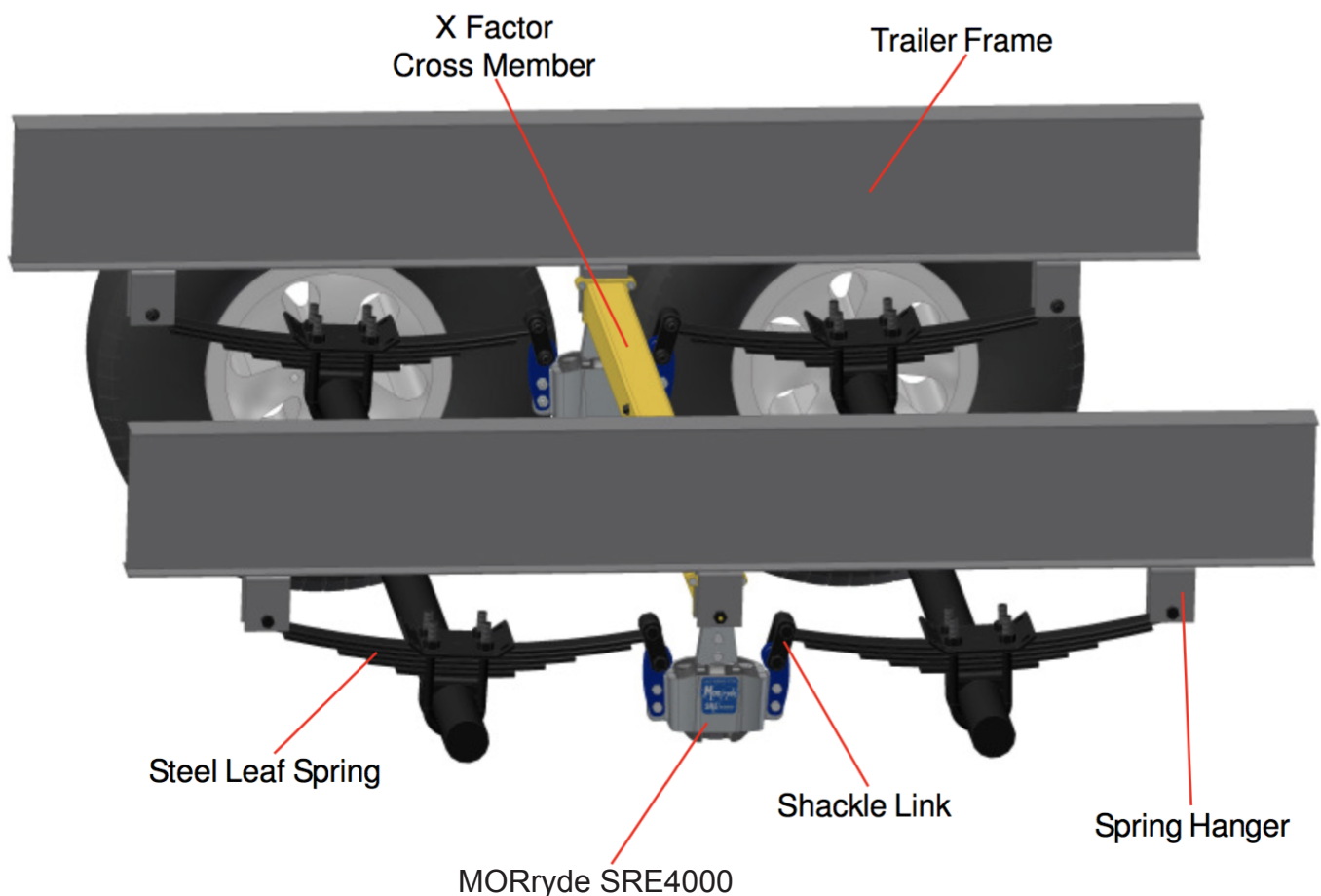
Introduction

Your recreational vehicle has been equipped with the MORryde SRE4000 Suspension System. The MORryde system is located between the axles on your trailer, replacing the steel equalizer (see diagram below). This system is uniquely engineered to work in concert with your steel leaf spring suspension to improve overall suspension performance.

At the heart of your MORryde system are MORryde's time tested rubber shear springs that have been a mainstay in the recreational vehicle market for over 40 years. This new system has been engineered specifically for your trailer using the rubber springs' ability to isolate and absorb road shock and increase your trailer's overall dynamic axle travel. The combination of the MORryde rubber equalizer working in concert with your trailer's leaf springs will greatly enhance your suspension system's ability to deal with today's rough roads. This means you will experience:

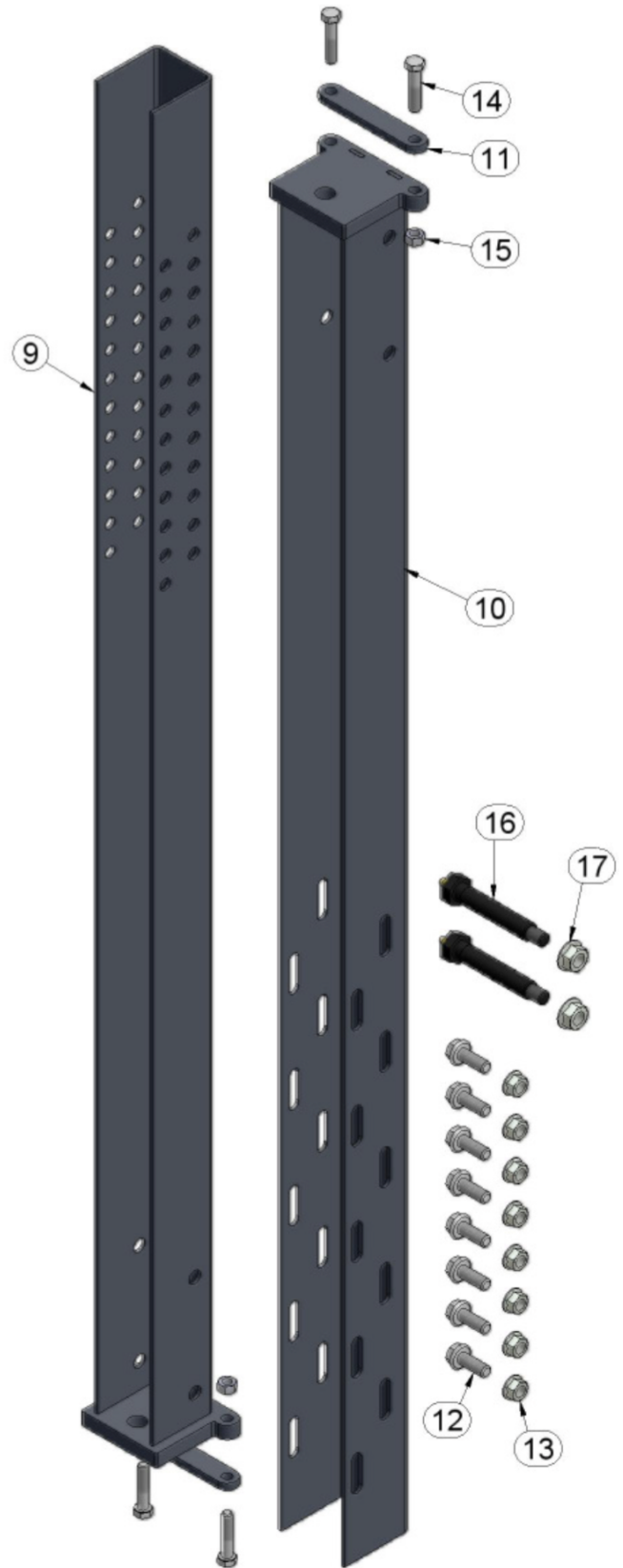
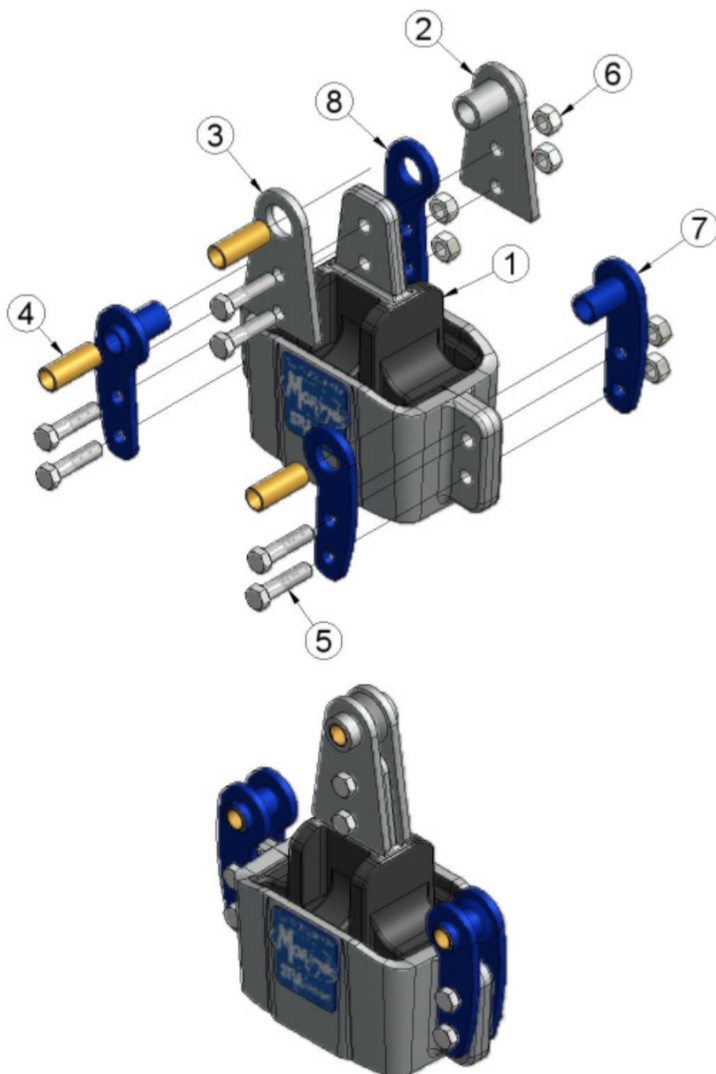
- **Smoother towing than with a conventional equalizer and leaf springs**
- **Better protection of your trailer from damaging road shock**

This manual will outline basic troubleshooting and check procedures for your MORryde Suspension System. Service manuals and instructions will be provided with replacement parts in the unlikely event that service is required.



Parts Listing

Parts List		
Item	Qty	Description
1	2	Rubber Shear Spring
2	2	Frame Hanger Weldment
3	2	Frame Hanger Plate
4	6	Bronze Bushing
5	12	7/16-14 x 1 3/4 Hex Head
6	12	7/16-14 Locknut
7	4	Shackle Bracket Weldment
8	4	Shackle Bracket Plate
9	1	Inner Channel Assembly
10	1	Outer Channel Assembly
11	2	Cross Member Brace
12	8	3/8-16 x 1 Flange Head
13	8	3/8-16 Flange Locknut
14	4	5/16-18 x 1 1/2 Hex Head
15	4	5/16-18 Locknut
16	2	7/16-20 x 3.40 Wet Bolt
17	2	7/16-20 Flange Locknut



Made in the U.S.A., Patent Pending.

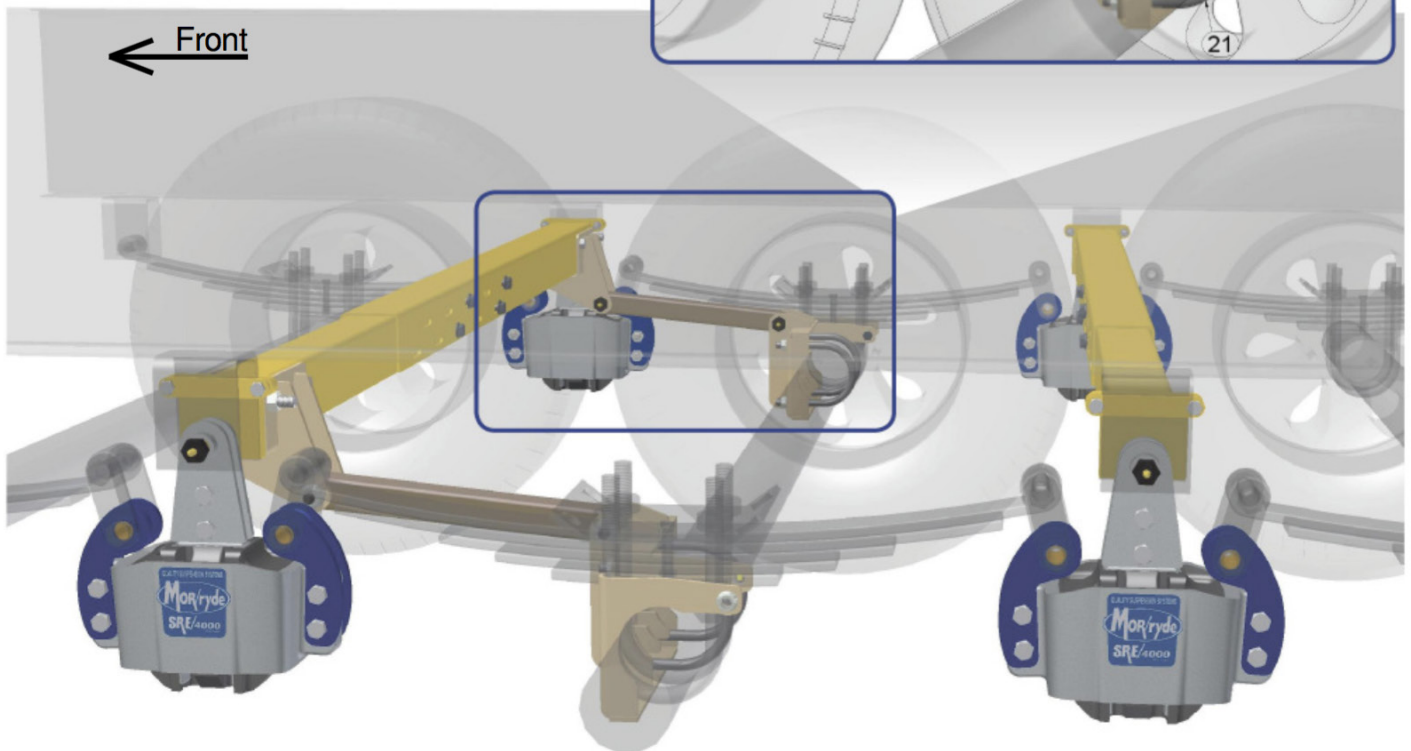
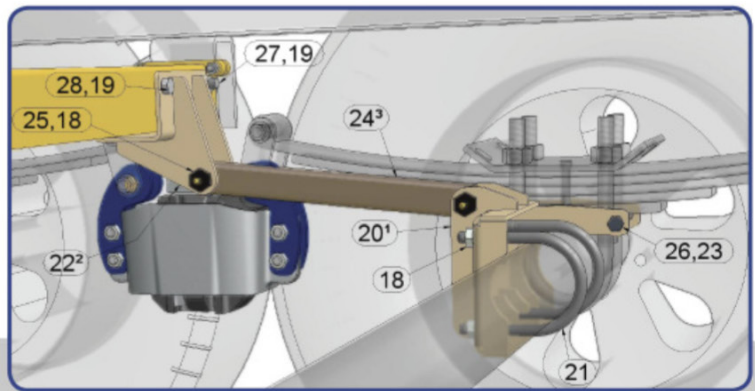
Triple Axle Setup

Additional Parts List		
Item	Qty	Description
18	12	7/16 Flange Locknut
19	6	7/16-14 Locknut
20 ¹	1	Axle Torque Bracket
21	4	7/16-20 x 3 1/8 x 4 1/2 Lg. U-Bolt
22 ²	1	Cross Member Torque Bracket
23	2	3/8-16 Flange Locknut
24 ³	2	Torque Arm
25	4	7/16-20 x 2.90 Wet Bolt
26	2	3/8-16 x 3 3/4 Hex Head
27	2	7/16-14 x 3 3/4 Hex Head
28	4	7/16-14 x 1 Hex Head

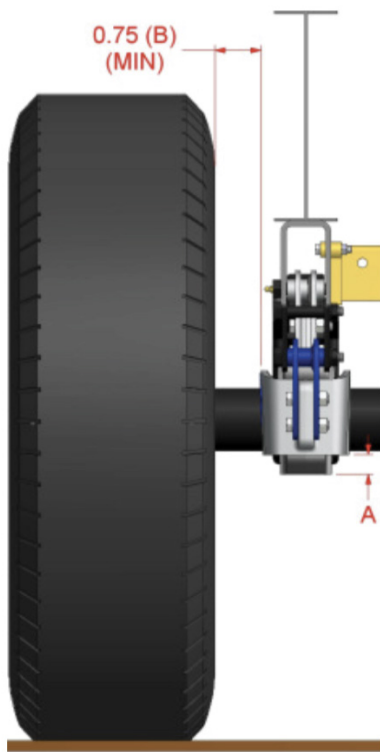
All brackets and hardware that control the center axle on the triple axle setup ALWAYS get installed between the front axle and the center axle.

When ordering replacement parts, please consider the following:

- 1) Specify roadside or curbside and whether the leaf spring is above the axle (overslung) or below the axle (underslung).
- 2) Specify whether the part is attached to the Inner Channel Assembly or the Outer Channel Assembly.
- 3) Specify 33" or 35" wheel base.



Measuring Shear Spring Deflection



Park the vehicle on level ground. Measure dimension A (from the bottom of the outer case to the bottom of the protruding rubber spring).

*Nominal rubber spring deflection (dimension A) should be 1/8" to 1-1/8".

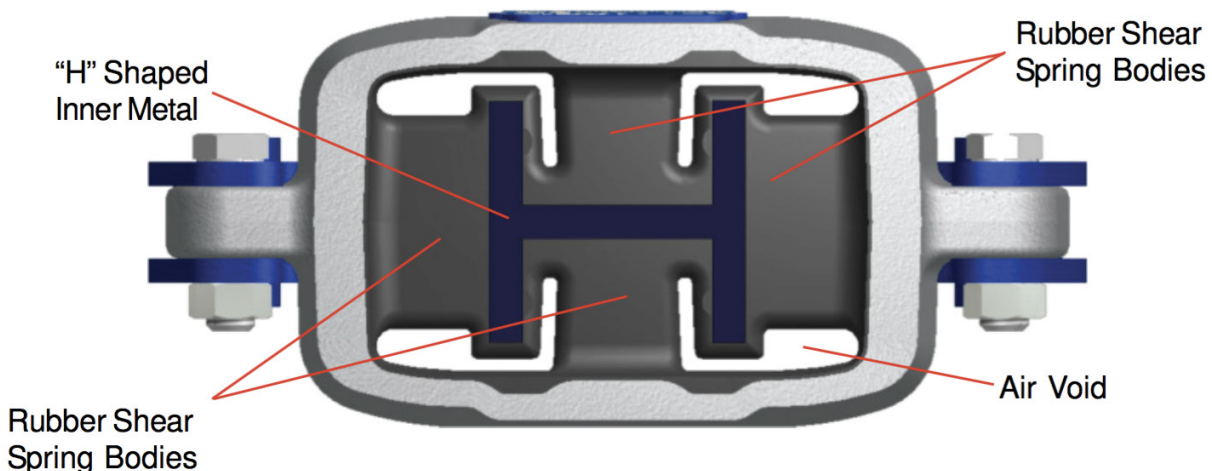
Minimum Clearance

To ensure proper tire to frame clearance, MORryde requires a minimum of 3/4" (0.75) between the inside wall of the tire and the MORryde SRE4000 (dimension B).

Rubber Spring Inspection

The rubber shear springs (#1 in Parts List) should be periodically inspected for any tears or cracks. There are 4 separate rubber shear spring bodies molded into the SRE and separated by 4 air voids and the "H" shaped inner metal. If ALL 4 shear spring bodies exhibit a 3/4" deep crack or tear all the way across, the shear spring should be replaced. This can be checked by using a flat tool such as a putty knife. The putty knife can be used to probe the shear spring in the affected area. If the knife can be inserted 3/4" deep, the spring rate of the spring is affected and should be replaced.

Note: It is normal to see shear spring weather checking, which is small surface cracks in the rubber. Weather checking does not require a shear spring to be replaced. It is also normal to see cracked rubber in the Air Void regions.



Basic Troubleshooting

Problem/Symptom	Cause	Correction
Excessive Tire Wear	Axle alignment.	Align axles.
	Improper tire pressure.	Adjust air pressure.*
	Tires out of balance.	Balance tires.
	Improper brake adjustment.	Adjust brakes.
Rough Ride	Torn shear spring.	Replace shear spring.
	Trailer is not level front to back.	Adjust pin box height to level out trailer.
	Broken or cracked leaf spring.	Replace leaf spring.
Excessive Sway	Improper tire pressure.	Adjust air pressure.*
	Torn shear spring.	Replace shear spring.
	Improper hitch weight.	Travel trailers should have 10%-12% hitch weight. 5th wheel trailers should have 20%-25% hitch weight.

*According to tire manufacturer specifications, proper tire pressure means inflating tires according to individual wheel weights (as long as a wheel is not overloaded), not necessarily inflating to the maximum pressure as specified on the tire.

Note: If a problem occurs that is not addressed here, please contact MORyde International direct for further service information at 574-293-1581.

MORryde SRE4000 Suspension System Limited Warranty

Summary of Warranty

We, MORryde, Inc., 1966 Sterling Avenue, P.O. Box 579, Elkhart, Indiana 46516 ("MORryde"), warrant to you, the original first purchaser of the new MORryde SRE4000 rubber suspension system ("Product"), for a period of three (3) years from the date of original first purchase ("Warranty Period"), that the Product is free of defects in material or workmanship under normal use and service and will meet or exceed all of our advertised written specifications, excepting items and uses excluded from this Warranty. For a copy of the complete MORryde Warranty please call, write, or email us using the correspondence information listed below.

PLEASE DIRECT ALL CORRESPONDENCE TO:

**MORryde International
P.O. Box 579
Elkhart, IN 46516
Phone: (574) 293-1581
Fax: (574) 294-4936
Email: service@morryde.com
www.morryde.com**



Above. Beyond. Always.