



X-FACTOR CROSSMEMBER

INSTALLATION INSTRUCTIONS



Above. Beyond. Always.

SP54-192 | 1

574.293.1581
www.MORryde.com

X-FACTOR CROSSMEMBER

INTRODUCTION

The MORryde X-Factor crossmember kit is designed to provide added strength and reinforcement to trailer frames. The installation instructions for the kit are detailed below. Please note these are specific installation instructions for trailers equipped with a MORryde leaf spring suspension system (LRE, RE, TRE).

PARTS LIST

- Crossmember half w/ holes, 2nd half with slots
- (8) 3/8-16 x 1 Flange bolt
- (16) 3/8-16 Flange locknut
- (8) 3/8-16 x 1 1/4 HHCS

PREPARATION

General Safety & Warnings:

⚠ WARNING Read and understand all instructions and warnings prior to installation.

⚠ WARNING You are personally responsible for following safe installation procedures and completing appropriate safety checks.

Tools Required:

- Torque wrench
- 9/16" socket & wrench
- Floor jacks
- Safety stands

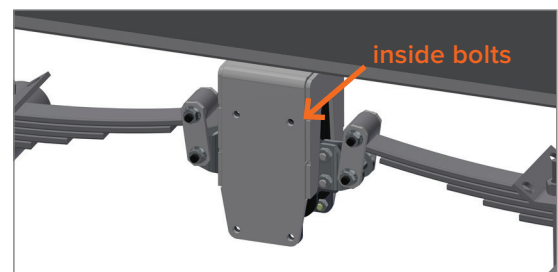
INSTALLATION

STEP 1

Using appropriately rated jacks to support the trailer, jack unit up and support frame with safety stands and support axles with floor jacks.

STEP 2

Remove all 4 inside bolts that bolt the rubber spring to the inside of the LRE frame hanger.



Above. Beyond. Always.

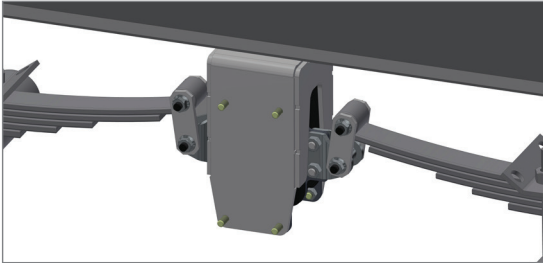
574.293.1581
www.MORryde.com

X-FACTOR CROSSMEMBER

INSTALLATION

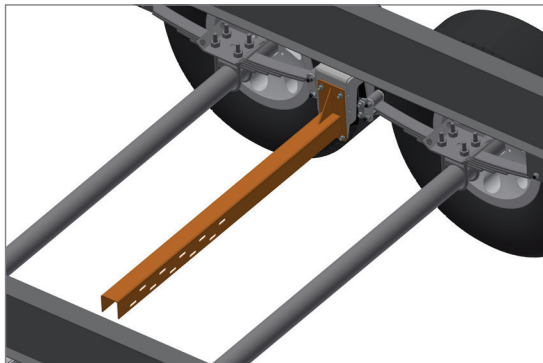
STEP 3

Replace with longer hex head bolts so that the bolts point toward the inside of the trailer.



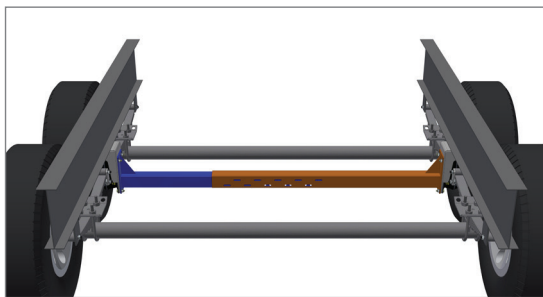
STEP 4

Slide cross member half with slots over the end of the bolt and thread the flange nut on without tightening. The open end of the channel should point down.



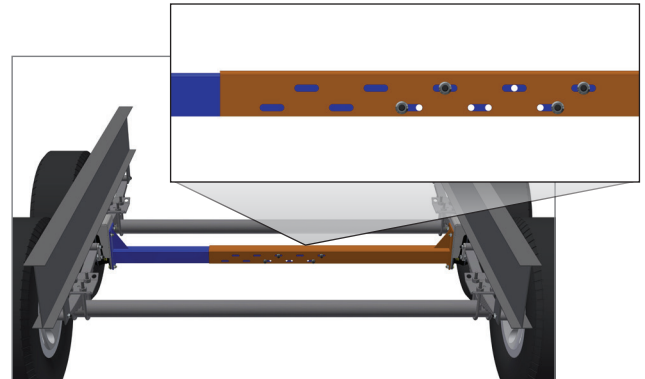
STEP 5

Repeat steps 2-4 on opposite side of frame for the cross member half with holes.



STEP 6

Make sure the cross member ends are pressed against the frame hanger. Line up holes on both cross members and insert flange bolts (4 on each side) into holes that are furthest from the center in both the top and bottom rows (do not tighten flange bolts at this time).



STEP 7

Tighten hex head bolts from step 3 on both sides to 40 ft-lbs. Then tighten flange bolts from step 6 to 40 ft-lbs.

STEP 8

Remove jacks and supports from frame and axles.

Questions? Contact the Parts Department at 574-293-1581 or email parts@morryde.com.



Above. Beyond. Always.

574.293.1581
www.MORryde.com

At MORryde, we have a passion for solving problems. Whether we're fabricating custom solutions, modifying a commercial chassis, or creating our innovative products, we answer to a wide range of markets and deliver on a variety of needs. At MORryde, it's simply about doing MORE for our customers, and it doesn't stop at the sale. We stand behind our products, believing in quality first, service always. No matter the issue, we'll be the first to respond and the last to be satisfied. In short, we build better — together.



Above. Beyond. Always.

574.293.1581
www.MORryde.com