



# RUBBER PIN BOX

## Installation Instructions

### MORryde RUBBER PIN BOX INSTALLATION INSTRUCTIONS

#### REQUIRED TOOLS:

- Tape Measure
- Impact wrench or ratchet
- Sockets
- Torque wrench capable of 300 ft. lbs.
- Drift/centering pin
- Drill & Bit to remove items such as exterior lights, brakeaway switches, & power cord boxes

#### OPTIONAL TOOLS:

- Porta-a-power or a Short bottle jack
- Hammer

**WARNING: PIN BOXES ARE HEAVY AND DIFFICULT FOR ONE PERSON TO HANDLE ALONE. IT IS HIGHLY RECOMMENDED THAT AT LEAST 2 PEOPLE INSTALL THIS SYSTEM.**

#### PROCESS:

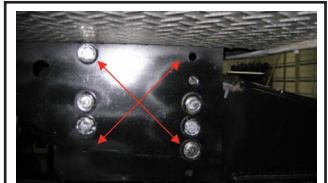
1. Measure the distance from the bottom of the factory king pin to a flat surface directly below.
2. Make note of the bolt hole location of the factory pin box. You will want to remount the MORryde pin box system in the same hole settings. **NOTE:** Some telescoping pin boxes require 1 to 2 holes to be re-drilled
3. Remove any items attached to the factory pin box (i.e. power cord box, brakeaway switch exterior light, lube plate, etc.)
4. Remove all but 2 of the bolts securing the pin box to the 5th wheel frame. Leave one bolt in place on the left side at the front and one bolt on the right side at the rear.

#### IMPORTANT: DO NOT REMOVE THE LAST 2 BOLTS UNTIL THE NEXT STEP IS COMPLETE

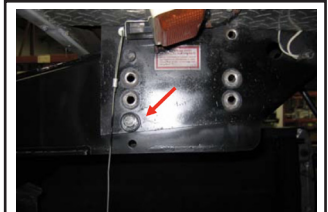
5. Back your tow vehicle up to the 5th wheel and hook the trailer to the truck hitch.
6. Remove the remaining two bolts.
  - a) Using the landing gear on your 5th wheel, raise the trailer two (2) to three (3) inches.
  - b) Pull your truck forward until the pin box clears the trailer. **(The rear of the pin box will fall to the bed of the truck. You may want to put a piece of wood across the bed for protection).**
7. Remove the factory pin box from the truck hitch and replace it with the MORryde pin Box. **NOTE:** Place a spacer block under the rear portion of the pin box so that it can be positioned for installation.



STEP 1



STEP 2



STEP 4



STEP 6 (b)



STEP 7



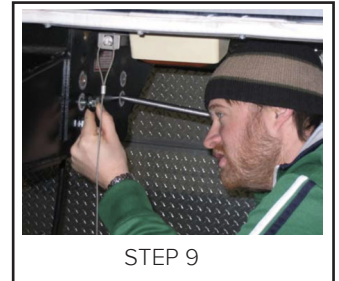
# RUBBER PIN BOX

## Installation Instructions

### MORryde RUBBER PIN BOX INSTALLATION INSTRUCTIONS

8. Back your truck under the trailer. Use your helper to line the pin box up to the mounting plate. Move your truck back and forth to line the holes front to rear and your landing gear for up and down.
9. Using a drift/centering pin (or screwdriver), center the holes and install at least one bolt on the left side and one on the right in different locations. Unlock the truck hitch and pull the truck forward.
10. Verify the pin height is within a 12" (+or-) of the factory setting, then install the remaining bolts and nuts.
11. Using the torque wrench, check all the bolts to ensure they are tightened to specifications as listed on the Torque Chart below.

BOLT SIZE	GRADE 5 ZINC	GRADE 8 ZINC
1/2-13	65 ft-lbs.	80 ft-lbs.
5/8-11	135 ft-lbs.	170 ft-lbs.
3/4-10	220 ft-lbs.	280 ft-lbs.



STEP 9



STEP 11

If you need more direction or information on how to install the MORryde Rubber Pin Box, check out the Installation Video on our YouTube Channel at: **Morryde International**



Above. Beyond. Always.