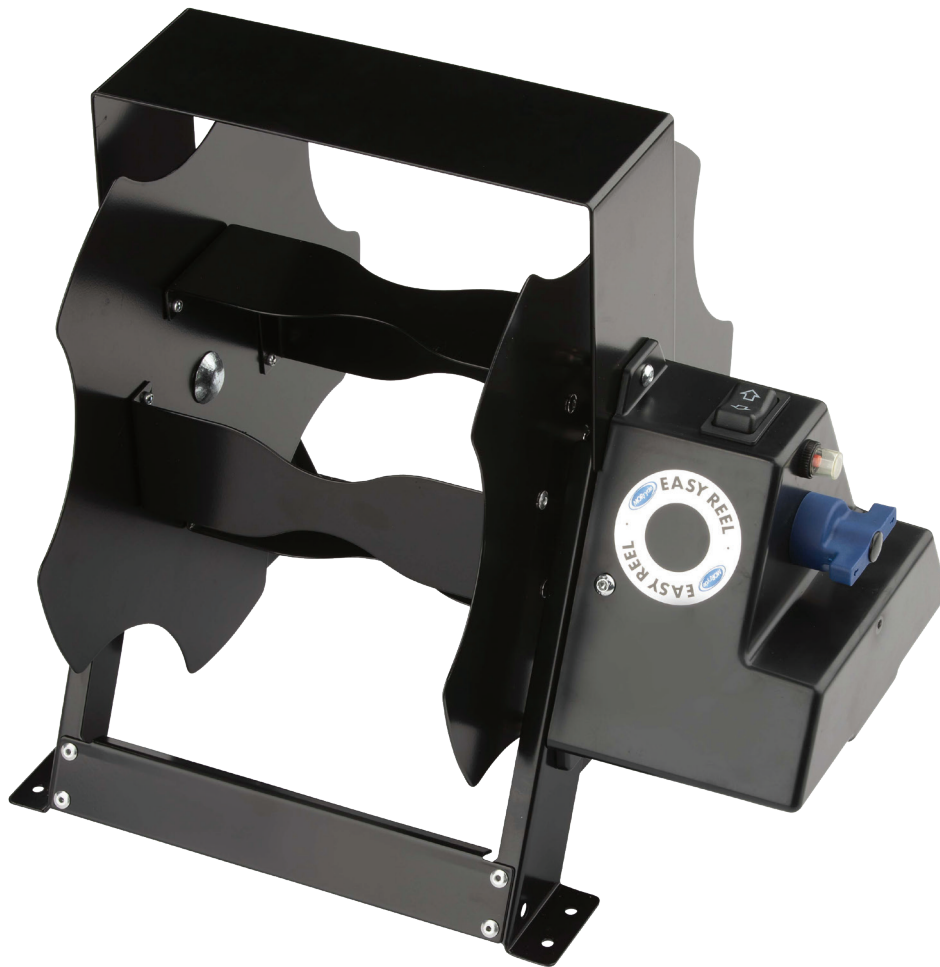


EASY REEL™ MOTORIZED SPOOLER

TROUBLESHOOTING GUIDE



| REEL56-014H

Designed to spool a 30 or 50 amp RV detachable power cord with an electric motor.



Above. Beyond. Always.

574.293.1581 • MORryde.com

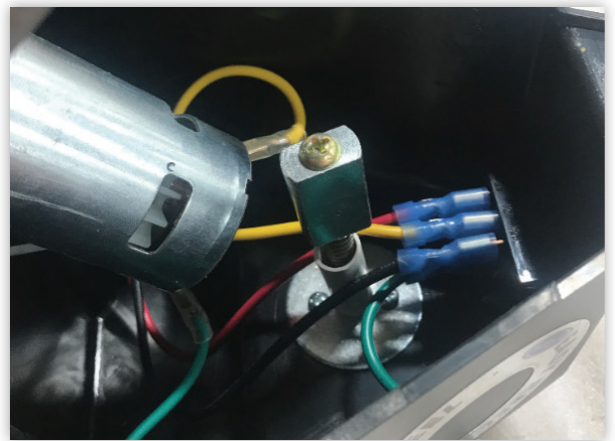
TROUBLESHOOTING

THE MOTOR DOESN'T MOVE OR MAKE ANY NOISE

1. Check the red circuit reset button on the side of the motor box.



2. Check to make sure 12v. is getting to the reel.
3. Check to make sure wires are connected in the box by removing the 3 bolts holding the box to the reel, then remove the motor bracket 2 bolts. Look inside the box and make sure there aren't any disconnected wires.



TROUBLESHOOTING

THE MOTOR TURNS, BUT THE REEL DOESN'T MOVE

1. Make sure the blue handle is turned horizontal (engaged).



2. Check to see if the bolt on the inside of the reel is tight.



3. To check the gearbox, remove the motor cover (3 bolts) then remove the motor bracket (2 bolts) at this point apply power to the motor, if the motor is turning but the

output from the gearbox is not, the motor/gearbox needs to be replaced. If the motor and output from the gearbox is turning adjust the key pin by removing the plastic plug in the blue knob. Put a small flat blade screw driver in the end to prevent the nut from spinning and use a Philip screw driver to loosen the bolt which extends the key pin. This will allow it to travel further into the key slot in the reel. (If it's extended (loosened) too far, it won't release when the clutch is disengaged). Re-install in reverse order and test to make sure the key pin will now engage and turn the reel.



At MORryde, we have a passion for solving problems. Whether we're fabricating custom solutions, modifying a commercial chassis, or creating our innovative products, we answer to a wide range of markets and deliver on a variety of needs. At MORryde, it's simply about doing MORE for our customers, and it doesn't stop at the sale. We stand behind our products, believing in quality first, service always. No matter the issue, we'll be the first to respond and the last to be satisfied. In short, we build better — together.

VERSION 1



Above. Beyond. Always.

574.293.1581 • MORryde.com • f t i y