

Mor/ryde Tandem Axle IS/LRE/RE/IRE Pre Installation Qualification

(Unit should be completed for recorded measurements)

MOR/ryde RE/IRE system is designed for straight axles w/double eye 1-3/4" wide x 26" long leaf springs

Customer Name _____ Phone _____

Coach Brand and Model _____ E-mail _____

Model Year _____ Gross Axle Weight Rating (GAWR) 5,200#, 6000# or 7000# (Circle one)

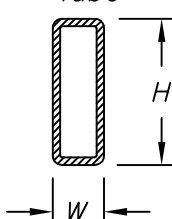
Is the frame Painted, Powder Coated, or E-Coated? (Circle one)

Record all measured linear dimensions in inches.

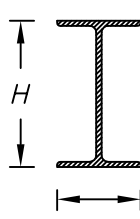
Type of Frame Rail (Check one)

- Rectangular Tube _____
- "I" Beam _____
- "C" Channel _____
- Other _____

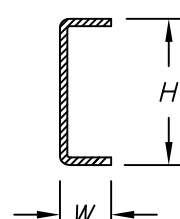
Rectangular Tube



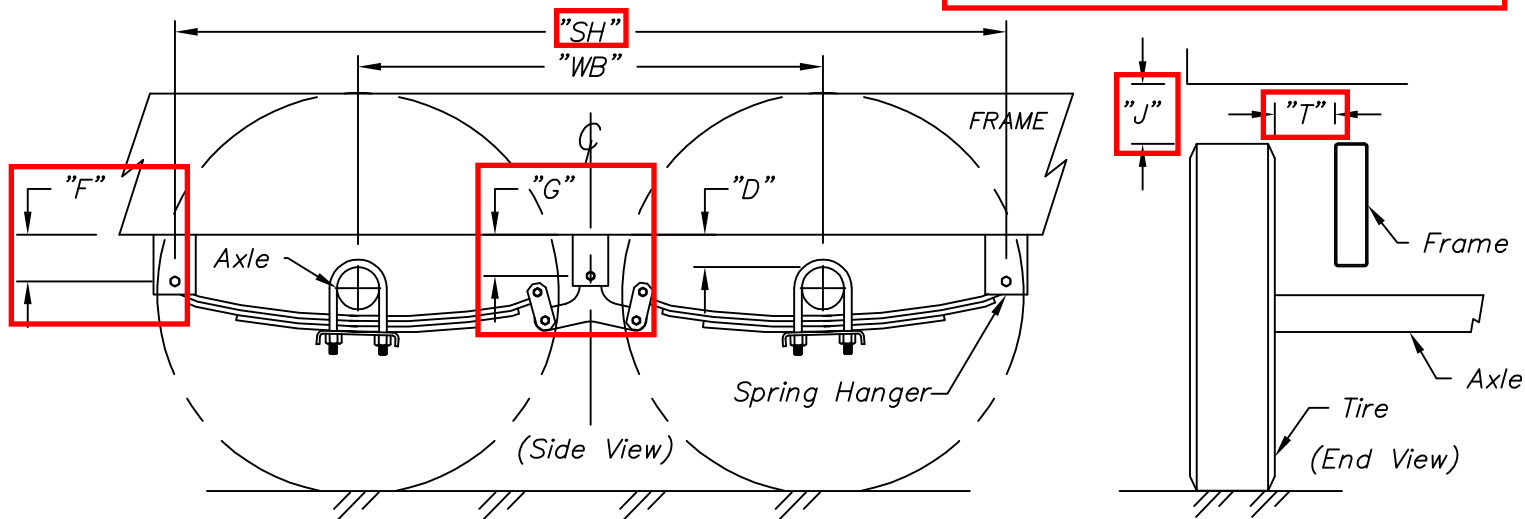
"I" Beam



"C" Frame



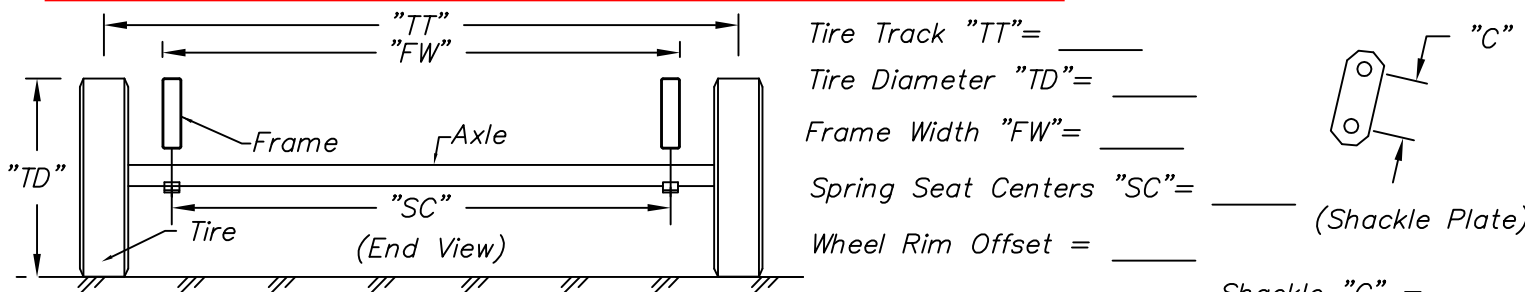
Frame Height H = _____ Frame Width W = _____ Spring Hanger Spread SH = _____



Top of axle tube to bottom of frame "D" Dimension = _____ Hanger "F" = _____ Hanger "G" = _____

Wheel Base "WB" = _____ ; Distance from outside edge of frame to tire side wall "T" = _____

Clearance between top of tire and bottom of Wheelwell "J" = _____



Tire Track "TT" = _____

Tire Diameter "TD" = _____

Frame Width "FW" = _____

Spring Seat Centers "SC" = _____

Wheel Rim Offset = _____

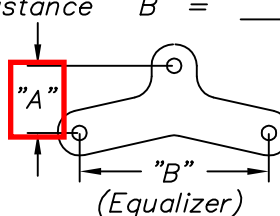
Shackle "C" = _____

Vertical distance between holes on Equalizer "A" = _____ ; Horizontal distance "B" = _____

Is the axle above the leaf spring? Yes _____ No _____

Are Spring Eye Bolts equipped with grease zerks? Yes _____ No _____

Shocks? Yes _____ No _____ Mounted- Inboard _____ Outboard _____



Tire size and brand _____

Inspectors Name _____ Date _____