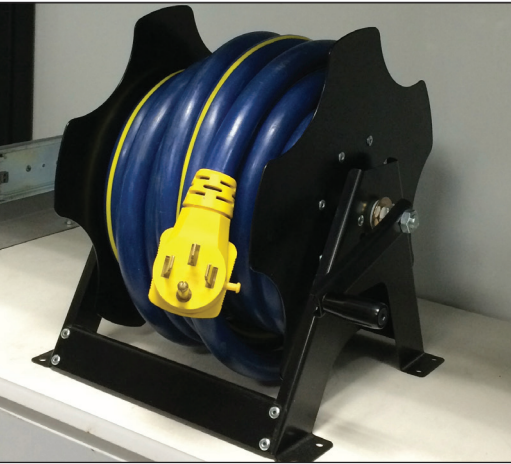


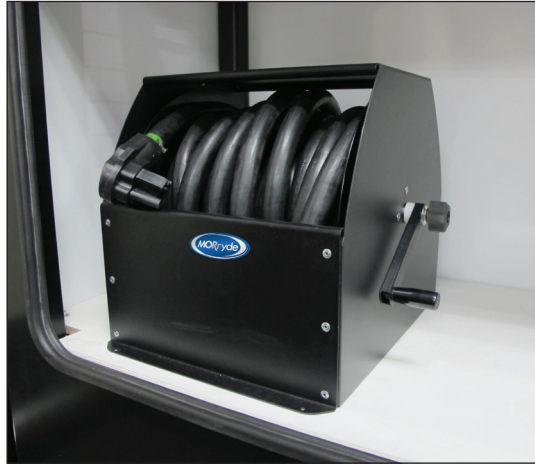
EASY REEL™ SPOOLER

INSTALLATION INSTRUCTIONS



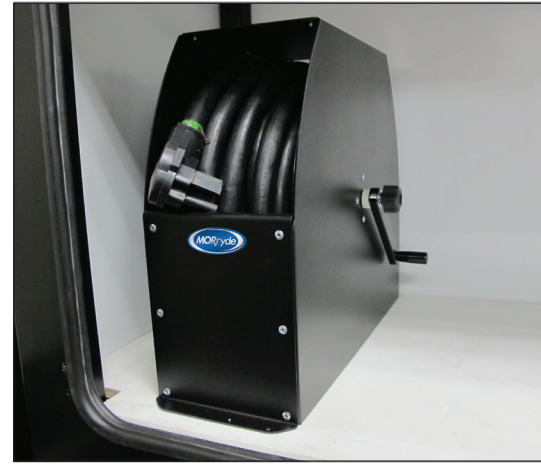
REEL56-009H

Stores up to 30' of amp cord



REEL56-004H

Stores up to 50' of amp cord



REEL56-001H

Stores up to 50' of amp cord

INSTALLATION INSTRUCTIONS

Using the wood screws provided, install your Easy Reel™ Spooler in the desired location by screwing into your wood sub-floor through the 4 mounting hole locations (8 mounting hole locations for the REEL56-009H) on your Easy Reel™ Spooler.

NOTE: If your floor is not wood, please contact MORryde for installation recommendations.



Screw Mounting Holes



Screw Mounting Holes



Above. Beyond. Always.

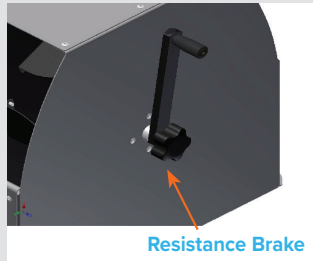
574.293.1581 • MORryde.com

INSTRUCTIONS FOR DETACHABLE 30/50' AMP CORD:

STORAGE

Step 1

Loosen the resistance brake on the handle of your Easy Reel™ Spooler by turning the knob counter-clockwise enough to allow your reel to freely rotate without any resistance.



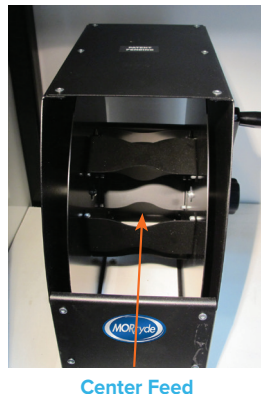
Step 3

While holding the cord in one hand, begin winding the cord using the Easy Reel™ Handle. Guide the cord from side-to-side as you coil the cord.

NOTE: Holding a rag in the hand that guides the cord will help clean to cord as you store it in your spooler.

Step 2

For Detachable AMP Cord:
Insert either end of the cord into one of the holes in the center of your Easy Reel™ Spooler and slide the cord to either the right or left side of the inner spool.



Step 4

Once the cord is fully stored, tighten the resistance brake on the handle of your Easy Reel™ Spooler by turning clockwise to keep the cord from unwinding during transit. This will also provide resistance, allowing for smooth removal (see below for removal).

REMOVAL

Step 1

Keeping the resistance brake on the handle of your Easy Reel™ Spooler tight, pull the cord completely out.

NOTE: Failure to keep the resistance brake tight when removing the cord may result in a “backlash” of your cord causing it to get temporarily stuck in your Easy Reel™ Spooler. If this happens, simply turn the handle of your spooler to re-spool the cord while holding the cord with your opposite hand. This will help tighten the cord around the spool. Once the cord is tight, engage the resistance brake on the handle. This will allow you to then easily remove the cord.

Step 2

Use your cord as directed by the manufacturer.

If you have any questions regarding the installation procedure or have difficulty with any of the steps, please give us a call at

574-293-1581 or email parts@morryde.com.



Above. Beyond. Always.

574.293.1581 • MORryde.com